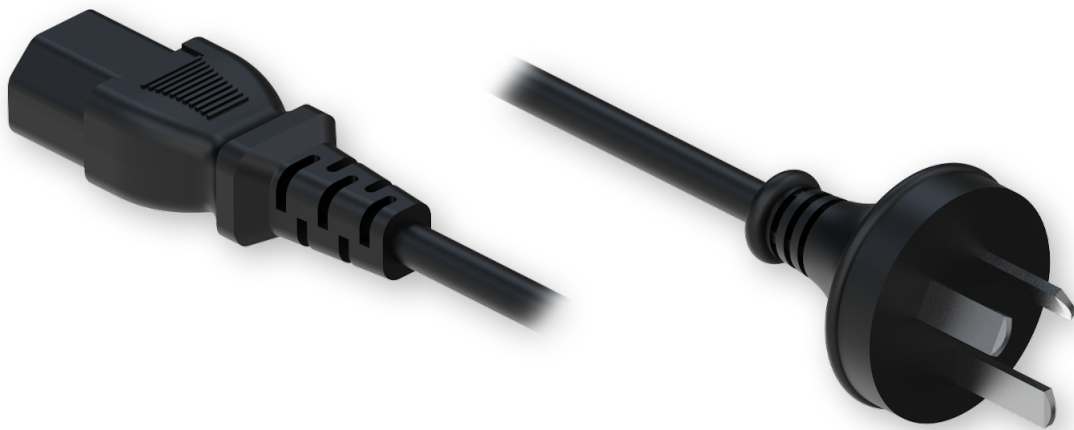


AU POWER CORD



Mechanical/Environmental

Input connector	Type I plug
Input voltage max	250 VAC
Output connector	C13 Plug
Conductor cross section	3 x 0.75 mm ² (18 AWG)
Maximum current	10 A
Weight	139 g
Total length	1200 mm
Protection material	PVC BLACK
RoHS compliant	✓
AS/NZS 3112:2017; AS/NZS 3100:2017; AS/NZS 60320.1:2012	✓

Spatial measurements

