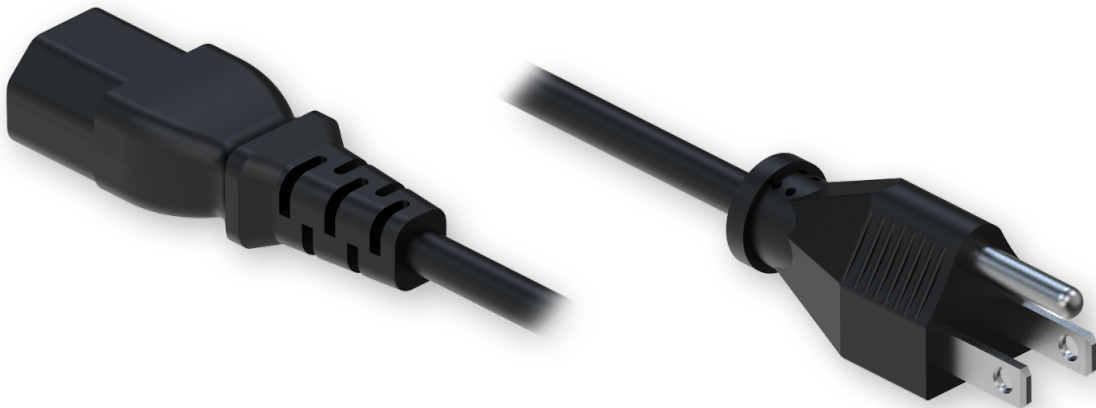


US POWER CORD



Mechanical/Environmental

Input connector	Type B plug
Input voltage max	250 VAC
Output connector	C13 Plug
Conductor cross section	3 x 0.75 mm ² (18 AWG)
Maximum current	10 A
Weight	122 g
Total Length	1200 mm
Protection material	PVC BLACK
RoHS compliant	✓
UL E513178	✓

Spatial measurements

